

2024 Camp Crusader At St. Louis King of France School Handbook

Camp Crusader is located at:

St. Louis King of France School: 1609 Carrollton Avenue, Metairie, LA 70005

504-267-9982

www.slkfschool.com/camp-crusader

EMAIL: campcrusader@slkfschool.com





Camp Crusader Mission



Camp Crusader is a summer camp provided by St. Louis King of France School. Camp Crusader's mission is to provide a safe and fun atmosphere for children ages PK4 - 7th grade.

Camp Crusader believes in encouraging children to learn while they play in a relaxed fun-filled environment. Camp Crusader believes in letting children's imaginations run wild while learning new skills and enjoying the magic months of summer.

Camp Hours



Camp Dates:
May 28th - July 19th

Monday - Friday
8:00 A.M. - 5:30 P.M.

Drop Off: 8:00 A.M. - 8:30 A.M.

Dismissal: 3:00 P.M. - 3:30 P.M.

Aftercare: 3:30 P.M. - 5:30 P.M.

Camp Crusader Tuition & Fees

TUITION AND FEES POLICY:

All tuition must be prepaid.

All weekly tuition payments are due by the Friday prior to week attending. All payments are non-refundable. *Your child cannot attend camp for the following week if tuition is not paid.*

If an NSF check is processed, you will need to pick up your camper immediately from camp until payment is made. If the school incurs bank charges resulting from, but not limited to, closed or overdrawn accounts, you will need to pay those charges in addition to regular tuition payments owed.



For 2024-2025 Registered SLKF Students:

Registration opens January 22, 2024

Priority Registration Fee: \$75 per camper

Weekly Tuition: \$225/wk per camper

Full Summer Discount: \$1,640.00

(Discount Deadline: May 3, 2024)

For Non-SLKf Students:

Registration opens February 26, 2024

Registration Fee: \$100 per camper

Weekly Tuition: \$250/wk per camper

Lunch (Must prepay week prior):

\$45/wk Snack included!

Aftercare:

\$10/day per camper

Camp Rules



Any behavior that interferes with a camper's ability to learn, a counselor's ability to care for a class, or an instructor's ability to teach is not allowed.

GENERAL RULES:

Camp Crusader encourages campers to contribute to the camp environment in a responsible and cooperative way.

Camper behavior that is disruptive to others, is unsafe, or requires the teacher or counselor to attend to the behavior is discouraged.

If a camper's negative behavior continues after a consultation with the Camp Directors and the camper's parents, the camper may be asked to leave camp for the day and/or duration of summer.

Certain repetitive or severe behavioral infractions may dictate that a student be dismissed from Camp Crusader permanently at the discretion of the camp and school administration.

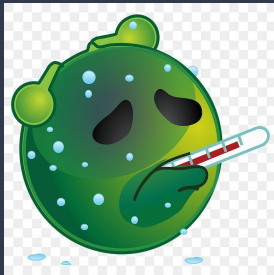
***NO REFUNDS WILL BE ISSUED.**

Illness Policy

Campers must be healthy enough to participate in Camp Crusader's daily camp activities.

For the safety and comfort of your camper, please keep them home until they feel better and are no longer contagious. If you are keeping your camper home due to illness, please contact the camp office by 9:00am and let the staff know of your camper's absence.

Any camper with a fever of 101 or higher, vomiting, diarrhea, or any communicable symptoms must remain at home until they are 24 hours symptom free WITHOUT the aid of medication.



In the event that your camper becomes ill during the day, you will be contacted as soon as possible.

If the parent or guardian is unable to be reached, the child's emergency contact will be notified. It is the responsibility of the parents to arrange for the child to be picked up from camp as soon as possible.

It is the responsibility of the parents to make sure that all phone numbers for emergency contacts are up to date.

Accidents/Emergencies: All precautions will be taken to prevent serious health risks to all campers. In the event that a minor injury occurs, First Aid will be administered at the camp.

Parents will assume all financial responsibility for any situation requiring emergency room treatment.

Health and Safety



MEDICATION:

Medication that needs to be administered to a child should be brought directly to a Camp Director in the Camp Crusader office via the parent/guardian in the original medicine container.


*Medicine must not be brought to the office by the child.

All medication must be accompanied by the completed "Camp Crusader Medicine Form."

HEALTH AND SAFETY:

All campers must be completely potty trained to remain at camp for the summer. We understand that there are times when a camper will have an accident; however, if this occurs on a regular basis, the child will not be allowed to continue coming to camp.

This is a health issue as we swim every day. It is also a safety issue as a counselor would have to be away from their group to change the camper, leaving the other counselor in charge with a large group of children. Safety is our top priority at camp and anything that will jeopardize this cannot be allowed.



All campers **MUST**
be **COMPLETELY**
potty trained to
remain at camp for
the summer.

Camper Forms

Each camper must have a completed:

- *Camp Registration Form**
- *1st-7th Activity Form**
- *Parent Handbook Acknowledgement**
- *Summer Camp Parental/Guardian Liability Waiver**
- *Camp Crusader Mastercard**
- *Summer Camp Medical Matters**
- *If needed, a Camp Crusader Medicine Form**
- *Swim Test Permission Form**
- *Photo release form**

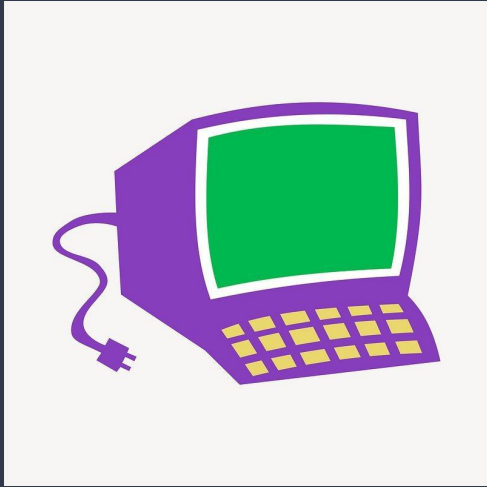
These forms must be given to the Camp Directors prior to the start of camp.

Please be sure that the information on the forms is accurate and complete.

Please do not leave any of the fields blank on any of the forms.



Technology



Campers who violate the Internet Guidelines of the school may be denied future internet privileges.

TECHNOLOGY:

Campers, staff, and administrators of the Archdiocese of New Orleans School District have the opportunity to access the internet to facilitate the need to prepare campers and staff to be computer literate in an increasingly technological world, to foster educational and personal growth, information gathering, and communication skills.

It is understood that the use of the internet is a privilege. The primary use of the network shall be reserved to those individuals who utilize the materials that are of “educational value” to the students of the Archdiocese of New Orleans School District.

The use of the system for defamatory, inaccurate, abusive, obscene, profane, sexually oriented, threatening, racially offensive, and illegal material or other prohibited activities shall not be permitted and the Archdiocese of New Orleans School District will use any and all efforts available to it, within the confines of the law, to prevent such material from entering the school network.

Professional employees of the school will monitor the use of the internet. Campers who violate the Internet Guidelines of the school may be denied future internet privileges.

Cell Phone Policy



In accordance with the Archdiocese of New Orleans guidelines, all campers will turn in their electronic devices to the Camp Directors when they arrive at camp. All devices will be labeled, locked, and stored away in our camp office. Devices will be returned to campers when he/she is picked up from camp.

If campers need to contact a parent at any time during the camp day, he/she may come to the camp office and use the camp office phone.

Daily Schedule

Parents and guardians must keep in mind that Camp Crusader's main priority during morning drop-off and afternoon pickup is safety for our campers. Therefore, we ask that parents pay close attention to the following rules and regulations for both morning drop-off and afternoon pickup.



Morning Arrival:

All campers and parents will walk through the black iron gates and drop off through the double doors of the gym and sign their camper in.

All campers will be in the gym until morning announcements and prayer are done and then campers will go to their first activity classroom.

Afternoon Dismissal:

All parents will return to the double doors of the gym and sign their camper out.

***ALL PARENTS MUST WALK THEIR CHILD TO THE DOOR!**

PK - K will have the same daily routine every week!

1st - 7th grade will have the option to choose what activities they want to participate in. If the camper does not like the activity by the end of the day on Monday, they can change activities no later than Monday afternoon!

PK-K

8:00 A.M. - 8:30 A.M.
DROP-OFF
8:30 A.M. - 9:00 A.M.
ANNOUNCEMENTS
9:00 A.M. - 9:45 A.M.
ACTIVITY 1
9:50 A.M. - 10:10 A.M.
SNACK
10:15 A.M. - 11:00 A.M.
ACTIVITY 2
11:00 A.M. - 11:30 A.M.
LUNCH
11:35 A.M. - 12:20 P.M.
ACTIVITY 3
12:25 P.M. - 1:10 P.M.
ACTIVITY 4
1:15 P.M. - 2:00 P.M.
ACTIVITY 5
2:05 P.M. - 2:50 P.M.
ACTIVITY 6
2:50 P.M. - 3:30 P.M.
DISMISSAL
3:30 P.M. - 5:30 P.M.
AFTER CARE

1ST-3RD

8:00 A.M. - 8:30 A.M.
DROP-OFF
8:30 A.M. - 9:00 A.M.
ANNOUNCEMENTS
9:00 A.M. - 9:45 A.M.
ACTIVITY 1
9:50 A.M. - 10:10 A.M.
SNACK
10:15 A.M. - 11:00 A.M.
ACTIVITY 2
11:05 A.M. - 11:50 A.M.
ACTIVITY 3
11:50 A.M. - 12:20 P.M.
LUNCH
12:25 P.M. - 1:10 P.M.
ACTIVITY 4
1:15 P.M. - 2:00 P.M.
ACTIVITY 5
2:05 P.M. - 2:50 P.M.
ACTIVITY 6
2:50 P.M. - 3:30 P.M.
DISMISSAL
3:30 P.M. - 5:30 P.M.
AFTER CARE

4th - 7th

8:00 A.M. - 8:30 A.M.
DROP-OFF
8:30 A.M. - 9:00 A.M.
ANNOUNCEMENTS
9:00 A.M. - 9:45 A.M.
ACTIVITY 1
9:50 A.M. - 10:10 A.M.
SNACK
10:15 A.M. - 11:00 A.M.
ACTIVITY 2
11:05 A.M. - 11:50 A.M.
ACTIVITY 3
11:55 A.M. - 12:40 P.M.
ACTIVITY 4
12:40 P.M. - 1:10 P.M.
LUNCH
1:15 P.M. - 2:00 P.M.
ACTIVITY 5
2:05 P.M. - 2:50 P.M.
ACTIVITY 6
2:50 P.M. - 3:30 P.M.
DISMISSAL
3:30 P.M. - 5:30 P.M.
AFTER CARE



Weekly Fun and Excitement



DAILY THEMES

- ★ MOVE IT MONDAY- Themed music playlists!
- ★ TASTY TUESDAY - surprise treats for the campers!
- ★ WACKY WEDNESDAY - Themed Dress Down Day!
- ★ TRIVIA THURSDAY - During the day, there will be random trivia. Every winner gets a prize from the Camp Treasure Box!
- ★ FUN FRIDAY - On Campus Field Trip, Chick-Fil-A Lunch*, and the Crusader Spectacular!

*If the camper purchased pre-paid lunch or by using the prepaid Chick-Fil-A link given.



Crusader Spectacular



*Every Friday, parents are welcome to come to the presentation in the gym at 2:15!

- 1) Introductions of Directors, Instructors, and Counselors for the week
- 2) Performances by the Camp Crusader Dance Team
- 3) Slideshows by the Technical Crusaders
- 4) Slideshow of photos from the week with music
- 5) Introducing the theme for the following week



Activity Options



- Splish Splash, Crusaders
- Crafty Crusaders
- Game on, Crusaders
- Sporty Crusaders
- Crusading Outdoors
- Crusader Theater
- Cookin' Crusaders
- Technical Crusaders
- Just Dance, Crusaders
- Scientific Crusaders
- Crusader Jewelers

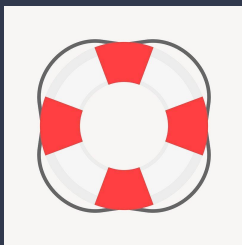
Dismissal & Aftercare

**PARENTS AND GUARDIANS
WILL BE CHARGED
\$1.00 PER MINUTE
FOR EVERY MINUTE THEY
ARE LATE
IN PICKING UP THEIR CHILD
AFTER 5:30 PM.**

Dismissal will be from 3:00-3:30 PM each day. Campers must be signed out by an adult on the “Camper Pick-Up Form.” at the double doors of the gym.

Campers not picked up by 3:30 PM will be signed into aftercare and parents will be charged a fee of \$10 for that day. Aftercare will be in the gym from 3:30-5:30 PM. If your camper is staying for aftercare, please pack a snack for him/her.

Aftercare may be added on for a fee of \$10/day.



Swimming & Water Play



SWIMMING:

Camp Crusader has an above ground pool on campus for our campers. It is 21x43 feet wide and 4 ½ feet deep. It also has a deck so that our certified Red Cross lifeguards will be able to closely monitor the swimmers. All campers entering K- 7th grade will be required to take a swim test to ensure that each camper is able to swim. If a student fails the test, they will be required to wear a certified flotation device. Please keep in mind this test is for the safety of our campers.

All PK4 campers MUST bring floaties or a swim vest!

All counselors will be required to participate in swimming with their campers.

Swimming is offered to ALL campers!

***PK4 and Kindergarten will swim EVERYDAY!
*1ST-7TH GRADE chose their own activities!**

Camper Supplies



ALL ITEMS MUST BE CLEARLY MARKED WITH THE CAMPER'S NAME.

ALL ITEMS MUST BE CLEARLY MARKED WITH THE CAMPER'S NAME.

All campers must have a refillable water bottle each day.

CAMP CLOTHING:

All campers will receive a Camp Crusader t-shirt. Additional t-shirts can be purchased for \$10 in the Camp Crusader Office. We **STRONGLY RECOMMEND** the Camp Crusader T-shirt and gym shorts for dress.

Students should dress casually and comfortably with **ENCLOSED** shoes (tennis shoes are best) that will remain securely on their feet. Be sure his/her clothes are appropriate for outdoor activities, sports, games, painting, etc.

All PK4 and Kindergarten campers should wear their bathing suits to camp each day, since they will be swimming/having water activities. Be sure to apply and send sunscreen and a towel with your camper daily.

Older students will be allowed to change into their swimsuits before swimming. Campers in 1st through 7th grade may wear their swimsuits to camp or bring them to camp in a bag with their towel. Campers should have a ziploc bag to place wet swimsuits in once they are finished swimming. Every student **MUST** have a pair of underwear to change into after swimming.

It is recommended for all campers in the PK4 and Kindergarten classes to have an extra change of clothes including socks and underwear labeled in a ziplock bag!

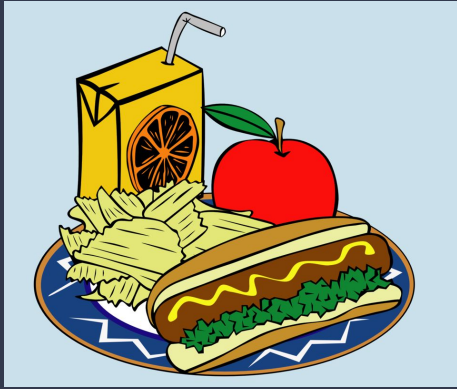
LOST AND FOUND:

We do have a lost and found area at camp. It is highly recommended that you label all items (clothing, towels, lunch boxes, water bottles, etc.) with your camper's name.

Camp Crusader will not be held responsible for lost or stolen items.

Please make a quick check of your child's backpack at the end of the camp day before leaving.

Snacks & Lunch



Please turn in all money in an envelope or ziplock bag with the camper's name on it to the Camp Crusader office. Camp Directors are responsible for all money.

** Please do not send your camper with money, or leave money with your camper's counselor.

SNACKS AND LUNCH:

Camp Crusader offers lunch and snack to campers daily. Lunches are \$40/week and snacks are included in tuition. Lunch includes a drink, entree, and side. Snack includes one snack from the snack cart. On Fridays, Chick-Fil-A will be offered to ALL campers for an extra charge.

All lunches are pre-paid. All lunch payments must be made by Friday of the week prior to your camper attending camp. The payments are only used for the week for which they were paid. There are no refunds or rollovers on lunch funds regardless of absence, holiday, or unexpected camp closure.

CRUSADER CAFÉ:

Lunch Menu (Monday-Thursday):

Hamburger with fries

Chicken Nuggets with fries

Hot Dog (served plain, with cheese, or with chili/cheese) with fries

Nachos (served with cheese, chili, or cheese/chili) with fries

(**Friday only**) Chick-Fil-A

Snacks:

Chips, Candy, Frozen Treats

Drinks:

Gatorade & Water

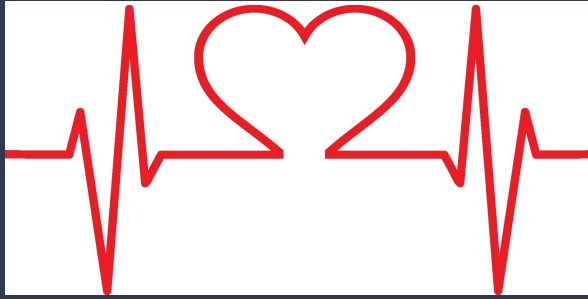
CHICK-FIL-A FRIDAY:

Students who purchased the lunch program for the week will be given the option of nuggets or a chicken sandwich, chips, cookies, and a drink on Fridays.

If you did not purchase the lunch meal, the parent will be able to order the Chick-Fil-A using a QR code link given when camp begins!

Campers are not allowed to have soft drinks at camp

Emergency Procedure



Thank you for entrusting us with the care and education of your child this summer.

Camp Crusader
is committed to providing a safe and fun atmosphere for all campers.

Please do not hesitate to contact us with any questions, issues, or concerns.

A Camp Crusader Camp Director will be available in the Camp Crusader office to help you with anything.

EMERGENCIES/CAMP CLOSURE:

-In the case of hurricanes, disasters, or other emergencies, Camp Crusader at St. Louis King of France will follow both the Jefferson and Orleans Parish School Systems. If one or both decide on school closures, Camp Crusader will also close. It is imperative that we have current telephone numbers and e-mail addresses on file in the Camp Crusader Office. The official listening posts for the Office of Catholic Schools are WWLAM 870, WWL-TV Channel 4, WDSU-TV Channel 6, FOX-TV Channel 8, and ABC-TV Channel 26.

-In the event of camp closure due to an Act of God, no refunds will be issued.

-SLKF will continue to follow the CDC, LA Department of Health, and the Archdiocese of New Orleans communicable diseases guidelines. Camp Crusader will stay abreast of all current guidelines and implement quarantines/closures as a last resort. However, if guidelines mandate a quarantine/closure, SLKF will abide by the rules expected of us by our governing agencies. Mandatory quarantines/closures will not result in a refund. All payments are non-refundable.

RIGHT TO AMEND HANDBOOK:

The School and Camp Administration retains the right to amend this handbook for just cause. Campers and parents will be given prompt notification if changes are made.