

CAMP CRUSADER:

WHERE IMAGINATIONS RUN WILD

2023

CAMP CRUSADER

AT

ST. LOUIS KING OF FRANCE

HANDBOOK

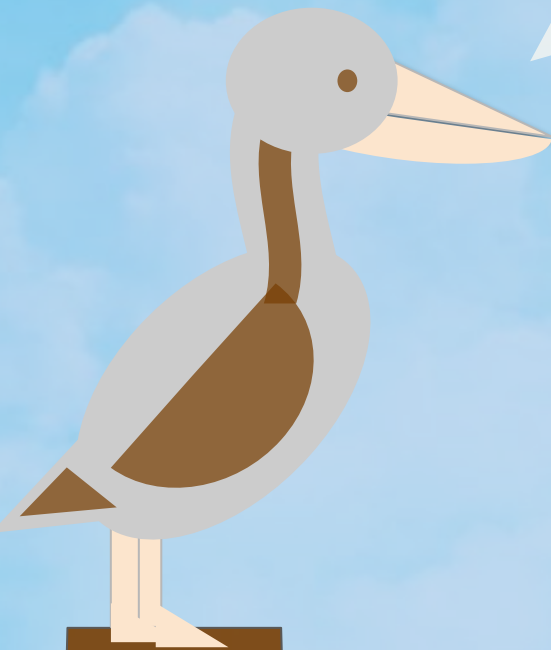


WELCOME TO CAMP CRUSADER

**CAMP CRUSADER MISSION:**

**Camp Crusader is a summer camp provided by St. Louis King of France School. Camp Crusader's mission is to provide a safe and fun atmosphere for children ages PK4 - 7th grade.**

**Camp Crusader believes in encouraging children to learn while they play in a relaxed fun-filled environment. Camp Crusader believes in letting children's imaginations run wild while learning new skills and enjoying the magic months of summer.**



Camp Crusader is located at:

St. Louis King of France School: 1609 Carrollton Avenue, Metairie, LA 70005

504-267-9982

[www.slkfschool.com/camp-crusader](http://www.slkfschool.com/camp-crusader)

EMAIL: [campcrusader@slkfschool.com](mailto:campcrusader@slkfschool.com)



# CAMP HOURS

**Camp Crusader Office Hours: 7:45 am- 4:00 pm**

<b>Drop-off:</b>	<b>7:45 am–9:00 am</b>
<b>Dismissal:</b>	<b>3:30 pm-4:00 pm</b>

# CAMP TUITION AND FEES



## **CAMP FEES:**

***\*All payments are Non-Refundable***

### **Registration:**

**-\$75 for children registered at SLKF for the 2023-2024 school year**

**-\$100.00 for non-SLKF students**

### **Weekly Tuition:**

**\$200 per camper for students registered at SLKF for the 2023/2024 school year**

**\$225 per camper for non-SLKF students**

**\*\*\*\$75.00 deposit on all weekly reservations due April 28th.**

**Discounts: (Available until April 28th for students registered at SLKF for the 2023-2024 school year)**

**Full Summer: \$ 1,440.00**

**After April 28th: (Only Weekly Reservations Available)**

**\*75.00 deposit on all weekly reservations due with registration**

## **Contact Us:**

**E-mail:**

**camperusader@slkfschool.com**

**Phone: 504-267-9982**

**\*\*For more information please visit**

**<https://www.slkfschool.com/camp-crusader/>**

## **TUITION AND FEES POLICY:**

***All tuition must be prepaid.***

**All weekly tuition payments are due by the Friday prior to week attending. All payments are non-refundable. *Your child cannot attend camp for the following week if tuition is not paid.***

**If an NSF check is processed, you will need to pick up your camper immediately from camp until payment is made. If the school incurs bank charges resulting from, but not limited to, closed or overdrawn accounts, you will need to pay those charges in addition to regular tuition payments owed.**

**\*Further, all future payments to Camp Crusader will only be accepted if paid in cash.**



# CAMP RULES

## **GENERAL RULES:**

**Camp Crusader encourages campers to contribute to the camp environment in a responsible and cooperative way.**

**Camper behavior that is disruptive to others, is unsafe, or requires the teacher or counselor to attend to the behavior is discouraged.**

**If a camper's negative behavior continues after a consultation with the Camp Directors and the camper's parents, the camper may be asked to leave camp for the day, and/or duration of summer.**

**Certain repetitive or severe behavioral infractions may dictate that a student be dismissed from Camp Crusader permanently at the discretion of the camp and school administration.**

**\*NO REFUNDS WILL BE ISSUED.**

**Any behavior that interferes with a camper's ability to learn, a counselor's ability to care for a class, or a teacher's ability to teach is not allowed.**

## **ILLNESS POLICY:**

**Campers must be healthy enough to participate in Camp Crusader's daily camp activities.**

**For the safety and comfort of your camper, please keep them home until they feel better and are no longer contagious. If you are keeping your camper home due to illness, please contact the camp office by 9:00am and let the staff know of your camper's absence.**

**Any camper with a fever of 101 or higher, vomiting, diarrhea, or any communicable symptoms must remain at home until they are 24 hours symptom free **WITHOUT** the aid of medication.**

**In the event that your camper becomes ill during the day, you will be contacted as soon as possible.**

**If the parent or guardian is unable to be reached, the child's emergency contact will be notified. It is the responsibility of the parents to arrange for the child to be picked up from camp as soon as possible.**

**It is the responsibility of the parents to make sure that all phone numbers for emergency contacts are up to date.**

**Accidents/Emergencies: All precautions will be taken to prevent serious health risks to all campers. In the event that a minor injury occurs, First Aid will be administered at the camp.**

**Parents will assume all financial responsibility for any situation requiring emergency room treatment.**



## HEALTH & SAFETY

### **MEDICATION:**

Medication that needs to be administered to a child should be brought directly to a Camp Director in the Camp Crusader office via the parent/guardian in the original medicine container.

\*Medicine must not be brought to the office by the child.

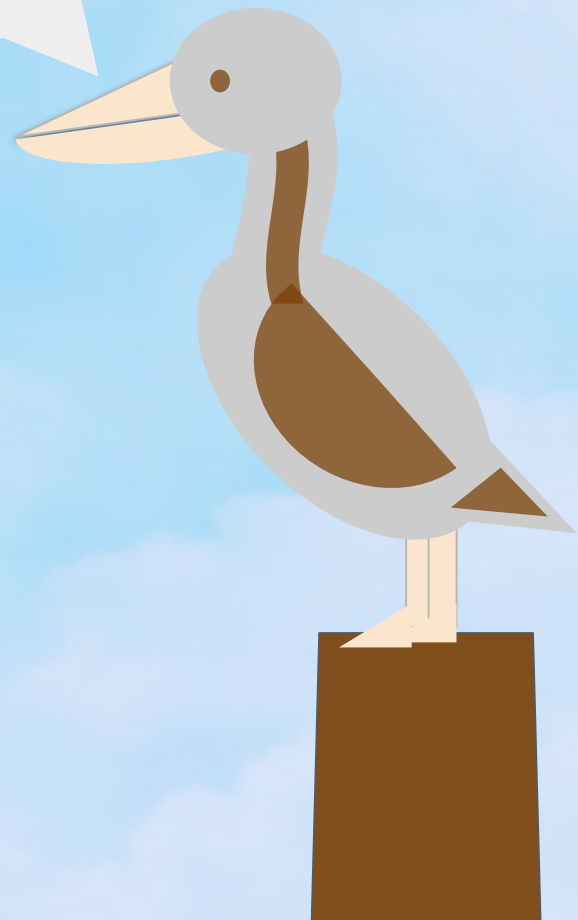
All medication must be accompanied by the completed “Camp Crusader Medicine Form.”

All campers **MUST** be **COMPLETELY** potty trained to remain at camp for the summer.

### **HEALTH AND SAFETY:**

All campers must be completely potty trained to remain at camp for the summer. We understand that there are times when a camper will have an accident; however, if this occurs on a regular basis, the child will not be allowed to continue coming to camp.

This is a health issue as we swim every day. It is also a safety issue as a counselor would have to be away from their group to change the camper, leaving the other counselor in charge with a large group of children. Safety is our top priority at camp and anything that will jeopardize this cannot be allowed.



# CAMPER FORMS



**Each camper must have  
a completed:**

- \*Camp Registration Form**
- \*Parent Handbook Acknowledgement**
- \*Summer Camp Parental/Guardian  
Liability Waiver**
- \*Camp Crusader Mastercard**
- \*Summer Camp Medical Matters**
- \*If needed, a Camp Crusader Medicine  
Form**
- \*Swim Test Permission Form**
- \*Photo release form**

**These forms must be  
given  
to the Camp Directors  
prior to the start of  
camp.**

**Please be sure that the  
information on the forms  
is accurate and complete.**

**Please do not leave any  
of the fields blank  
on any of the forms.**



## **TECHNOLOGY:**

**Campers, staff, and administrators of the Archdiocese of New Orleans School District have the opportunity to access the internet to facilitate the need to prepare campers and staff to be computer literate in an increasingly technological world, to foster educational and personal growth, information gathering, and communication skills.**

**It is understood that the use of the internet is a privilege. The primary use of the network shall be reserved to those individuals who utilize the materials that are of “educational value” to the students of the Archdiocese of New Orleans School District.**

**The use of the system for defamatory, inaccurate, abusive, obscene, profane, sexually oriented, threatening, racially offensive, and illegal material or other prohibited activities shall not be permitted and the Archdiocese of New Orleans School District will use any and all efforts available to it, within the confines of the law, to prevent such material from entering the school network.**

**Professional employees of the school will monitor the use of the internet. Campers who violate the Internet Guidelines of the school may be denied future internet privileges.**

**Campers who violate the Internet Guidelines of the school may be denied future internet privileges.**

## DAILY SCHEDULE:

### MORNING ARRIVAL:

Parents and guardians must keep in mind that Camp Crusader's main priority during morning drop-off and afternoon pickup is safety for our campers. Therefore, we ask that parents pay close attention to the following rules and regulations for both morning drop-off and afternoon pickup.

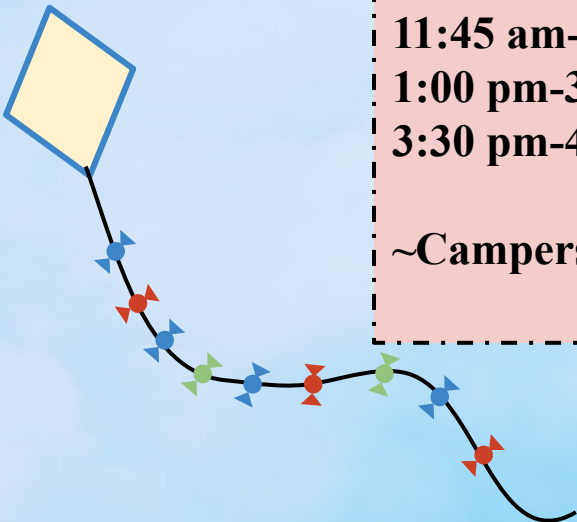
- \* Campers will be dropped off and picked up each day at the doors of Marion Hall (closest to the Church).
- \* Parents must bring his/her child to the door.

### CAMP ACTIVITIES:

\*A typical daily schedule is as follows:

7:45 am-9:00 am Drop-off  
8:30 am-10:00 am Camp Activities  
10:00 am-10:30 am Snack  
10:30 am-11:45 am Camp Activities  
11:45 am-1:00pm Lunch / Recess  
1:00 pm-3:30pm Camp Activities  
3:30 pm-4:00 pm Dismissal

~Campers will have swim play daily



## **DISMISSAL PROCEDURES:**

- \* Campers may be picked up at 3:30 pm at the double doors of Marion Hall (closest to the Church).
- \* Please observe the 5 mph speed limit in the big parking lot. Please park only in designated parking spaces.
- \* All campers must be picked up by 4:00 pm.
- \* Camp Crusader does not offer aftercare hours.

**PARENTS AND GUARDIANS WILL BE  
CHARGED  
\$1.00 PER MINUTE  
FOR EVERY MINUTE THEY ARE LATE  
IN PICKING UP THEIR CHILD  
AFTER 4:00 PM.**

# SWIMMING AND WATER PLAY

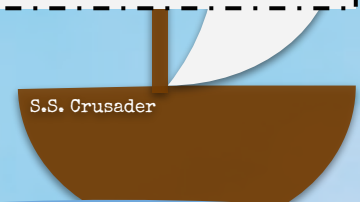
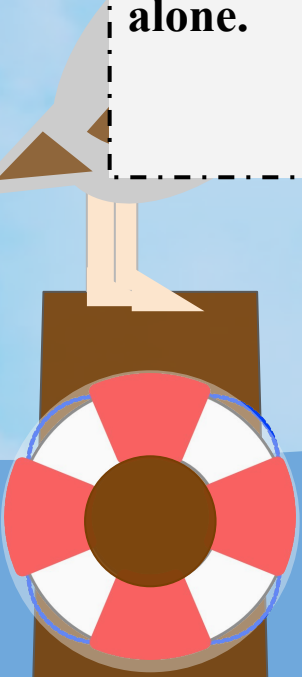


## **SWIMMING:**

Camp Crusader has an above ground pool on campus for our campers. It is 21x43 feet wide and 4 ½ feet deep. It also has a deck so that our certified Red Cross lifeguards will be able to closely monitor the swimmers. All campers entering PK4– 7<sup>th</sup> grade will be required to take a swim test to ensure that each camper is able to swim. If a student fails the test, they will be required to wear a certified flotation device. Please keep in mind this test is for the safety of our campers.

\*\*\*\*\*

**We ask that all PK4 and Kindergarten campers bring floaties or a swim vest until we are comfortable that he/she can swim alone.**



All counselors will be required to participate in swimming with their campers.

### **CAMPER SUPPLIES:**

All campers must have a refillable water bottle each day.

### **CAMP CLOTHING:**

All campers will receive a Camp Crusader t-shirt. Additional t-shirts can be purchased for \$10 in the Camp Crusader Office. We **STRONGLY RECOMMEND** the Camp Crusader T-shirt and gym shorts for dress.

Students should dress casually and comfortably with **ENCLOSED** shoes (tennis shoes are best) that will remain securely on their feet. Be sure his/her clothes are appropriate for outdoor activities, sports, games, painting, etc.

PK4 and Kindergarten campers should wear their bathing suits to camp each day, since they will be swimming/having water activities. Be sure to **apply** and send sunscreen and a towel with your camper daily.

Older students will be allowed to change into their swimsuits before swimming. Campers in 1<sup>st</sup> through 7<sup>th</sup> grade may wear their swimsuits to camp or bring them to camp in a bag with their towel. Campers should have a ziploc bag to place wet swimsuits in once they are finished swimming. Every student **MUST** have a pair of underwear to change into after swimming.

**ALL ITEMS MUST BE CLEARLY MARKED WITH THE CAMPER'S NAME.**

**It is recommended for all campers in the PK4 and Kindergarten classes to have an extra change of clothes including socks and underwear. Please place this in a Ziploc bag with your child's name on each piece of clothing and the bag.**

### **LOST AND FOUND:**

We do have a lost and found area at camp. It is highly recommended that you label all items (clothing, towels, lunch boxes, water bottles, etc.) with your camper's name.

Camp Crusader will not be held responsible for lost or stolen items.

Please make a quick check of your child's backpack at the end of the camp day before leaving.

## SNACKS AND LUNCH:

Camp Crusader offers lunch and snack to campers daily. Lunches are \$35/week and snacks are included in tuition. Lunch includes a drink, entree, and side. Snack includes one snack from the snack cart.

All lunches are pre-paid. All lunch payments must be made by Friday of the week prior to your camper attending camp. The payments are only used for the week for which they were paid. There are no refunds or rollovers on lunch funds regardless of absence, holiday, or unexpected camp closure.

## CRUSADER CAFÉ:

### Lunch Menu (Monday-Thursday):

Hamburger with fries

Chicken Nuggets with fries

Hot Dog (served plain, with cheese, or with chili/cheese) with fries

Nachos (served with cheese, chili, or cheese/chili) with fries

(\*\*Friday only\*\*) Pizza

### Snacks:

Chips, Candy, frozen Treats

### Drinks:

Gatorade & Water

**\*Campers are not allowed to have soft drinks at camp\***

## PIZZA FRIDAY:

Students who purchased the lunch program for the week will be given pizza and a drink on Fridays.

Please turn in all money in an envelope or ziplock bag with the camper's name on it to the Camp Crusader office. Camp Directors are responsible for all money.

**\*\* Please do not send your camper with money, or leave money with your camper's counselor.**

### **EMERGENCIES/CAMP CLOSURE:**

**-In the case of hurricanes, disasters, or other emergencies, Camp Crusader at St. Louis King of France will follow both the Jefferson and Orleans Parish School Systems. If one or both decide on school closures, Camp Crusader will also close.. It is imperative that we have current telephone numbers and e-mail addresses on file in the Camp Crusader Office. The official listening posts for the Office of Catholic Schools are WWLAM 870, WWL-TV Channel 4, WDSU-TV Channel 6, FOX-TV Channel 8, and ABC-TV Channel 26.**

**-In the event of camp closure due to an Act of God, no refunds will be issued.**

**-SLKF will continue to follow the CDC, LA Department of Health, and the Archdiocese of New Orleans communicable diseases guidelines. Camp Crusader will stay abreast of all current guidelines and implement quarantines/closures as a last resort. However, if guidelines mandate a quarantine/closure, SLKF will abide by the rules expected of us by our governing agencies. Mandatory quarantines/closures will not result in a refund. All payments are non-refundable.**

### **RIGHT TO AMEND HANDBOOK:**

**The School and Camp Administration retains the right to amend this handbook for just cause. Campers and parents will be given prompt notification if changes are made.**

**Thank you for entrusting us with  
the care and education  
of your child this summer.**

**Camp Crusader  
is committed to providing a safe and fun  
atmosphere for all campers.**

**Please do not hesitate to contact us with any questions,  
issues, or concerns.**

**A Camp Crusader Camp Director will be available in the  
Camp Crusader office to help you with anything.**